



PRO AUDIO LLC

932 E. Impala Ave.
Mesa, AZ 85204-6699 U.S.A.
(480) 892-4444 Fax (480) 892-9139
email: proaudioinfo@telonics.com

Telonics FP-100 Toolbox - USB Device Software and Driver Installation

The setup program for Telonics FP-100 Toolbox installs device software for the Telonics FP-100 Audio Volume Pedal. You may see one or more of the following messages during the installation of FP-100 Toolbox:

Windows Vista and Windows 7 users:

Click the **Install** button if you see the following message. If you do not choose this option during installation (you instead click Don't Install), you will have to reinstall FP-100 Toolbox to install the USB device software. You can optionally check the box that says "Always trust software from Telonics, Inc." to avoid this message in the future.

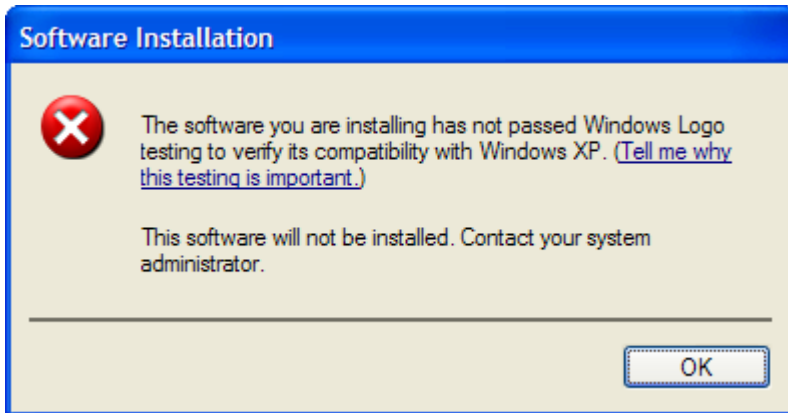


Windows XP users:

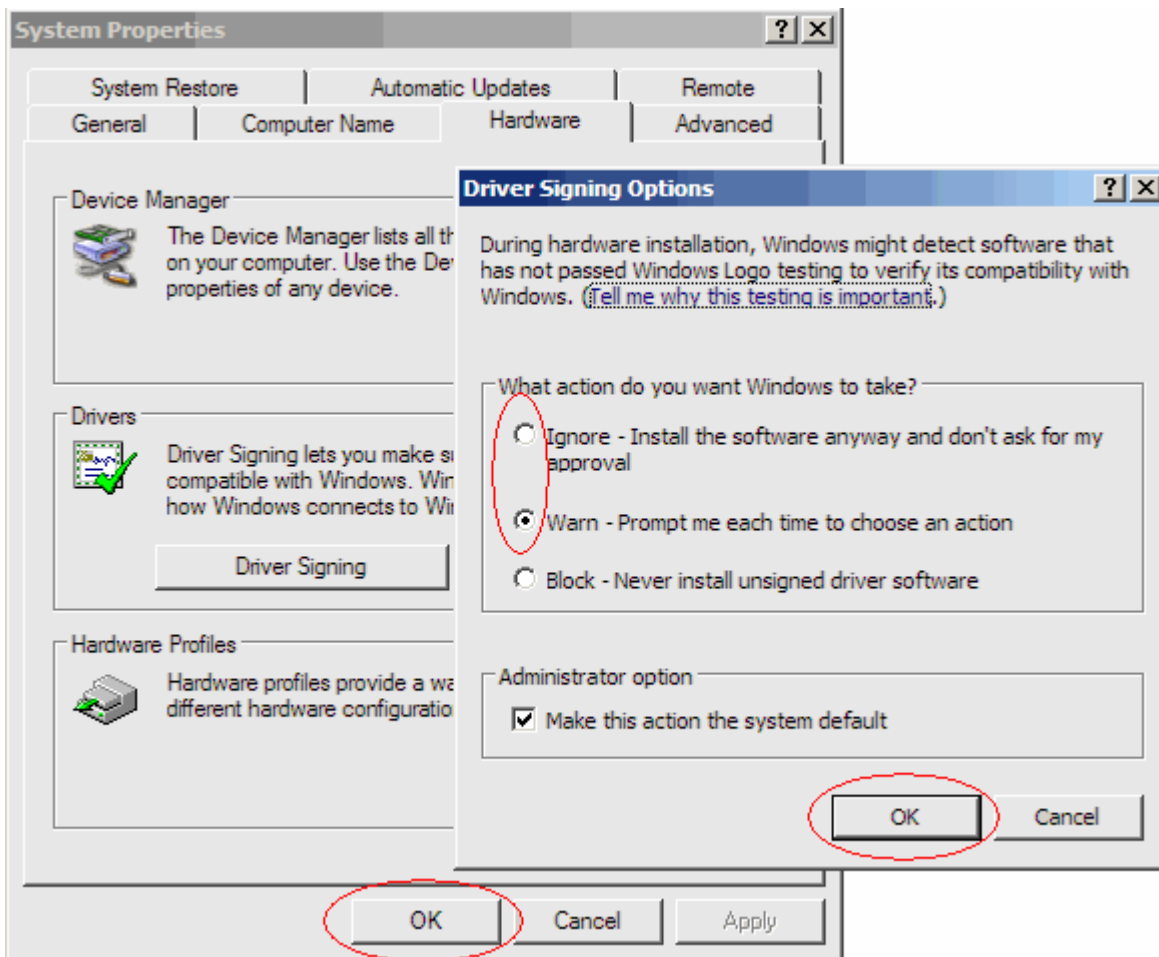
Click the **Continue Anyway** button if you see the following message. If you do not choose this option during installation (you instead click STOP Installation), you will have to reinstall FP-100 Toolbox to install the USB device software.



If you see the following message during installation, you will need to modify your **Driver Signing** settings in Windows XP and then reinstall FP-100 Toolbox.



Right-click on the **My Computer** icon in the Start Menu or on the desktop and choose **Properties**. Go to the **Hardware** tab and click **Driver Signing**. Change the setting to **Ignore** or **Warn**. Click **OK** to close the **Driver Signing Options** window. Click **OK** to close **System Properties**.

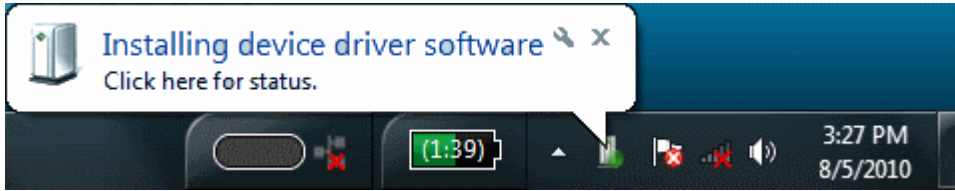


Connecting FP-100 to your PC (following installation of FP-100 Toolbox)

Windows 2000, Windows Vista, or Windows 7 users:

The USB device driver will be installed automatically when you plug in your FP-100. No user intervention is required. The Notification Area indicates installation progress and results:

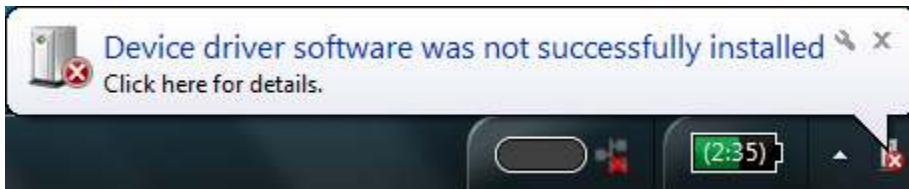
Installing the device driver:



If you see the following message, the FP-100 device driver installed successfully:



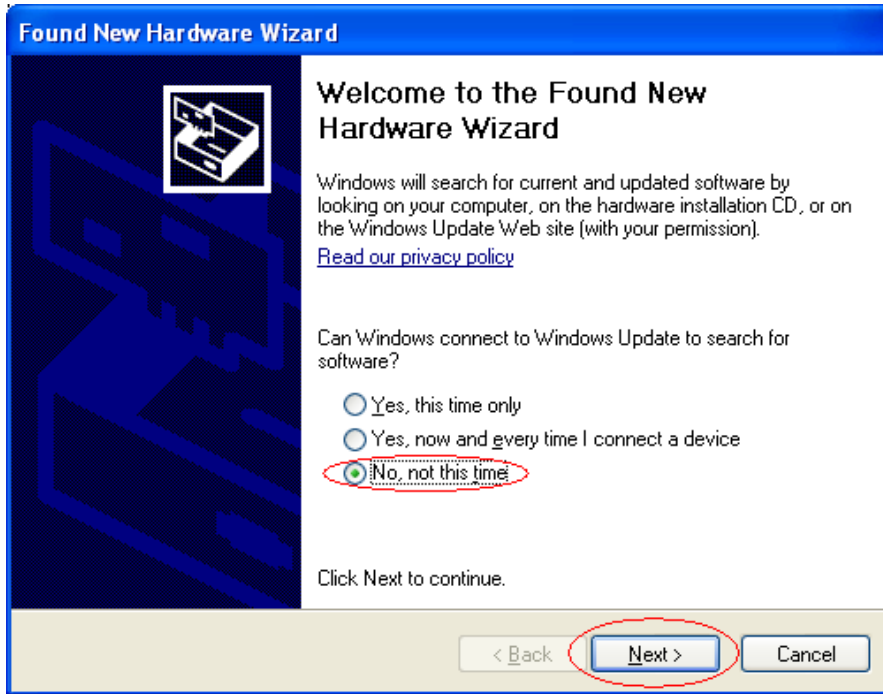
If you see the following message, the FP-100 device driver installation failed and you must reinstall FP-100 Toolbox:



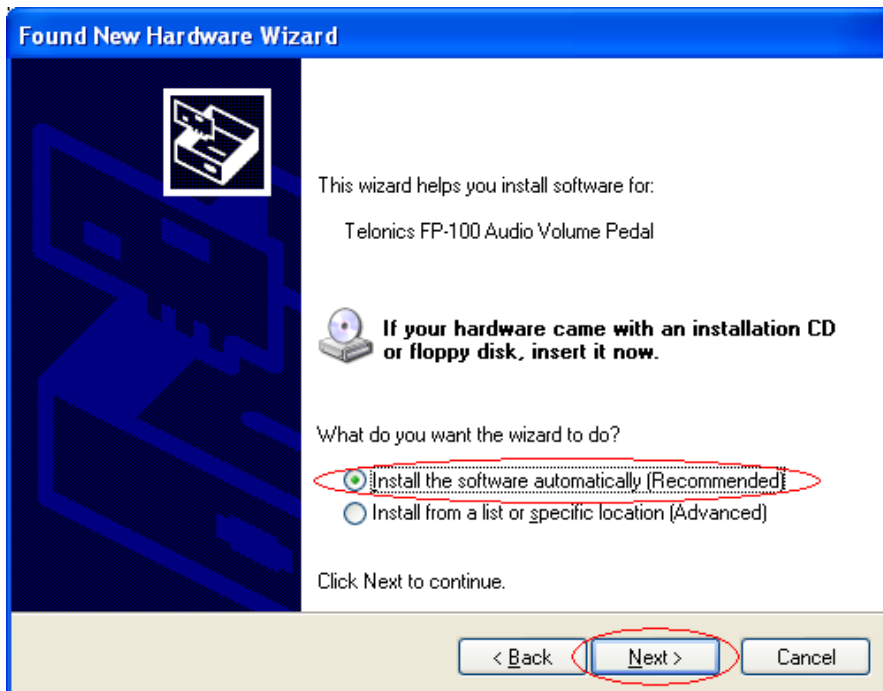
Windows XP users:

The Found New Hardware Wizard will display the first time you plug in your FP-100. The wizard will display several pages requesting information:

When you see the following page, click the **No, not this time** radio button and then click the **Next** button. For some users, the hardware wizard will skip this page.



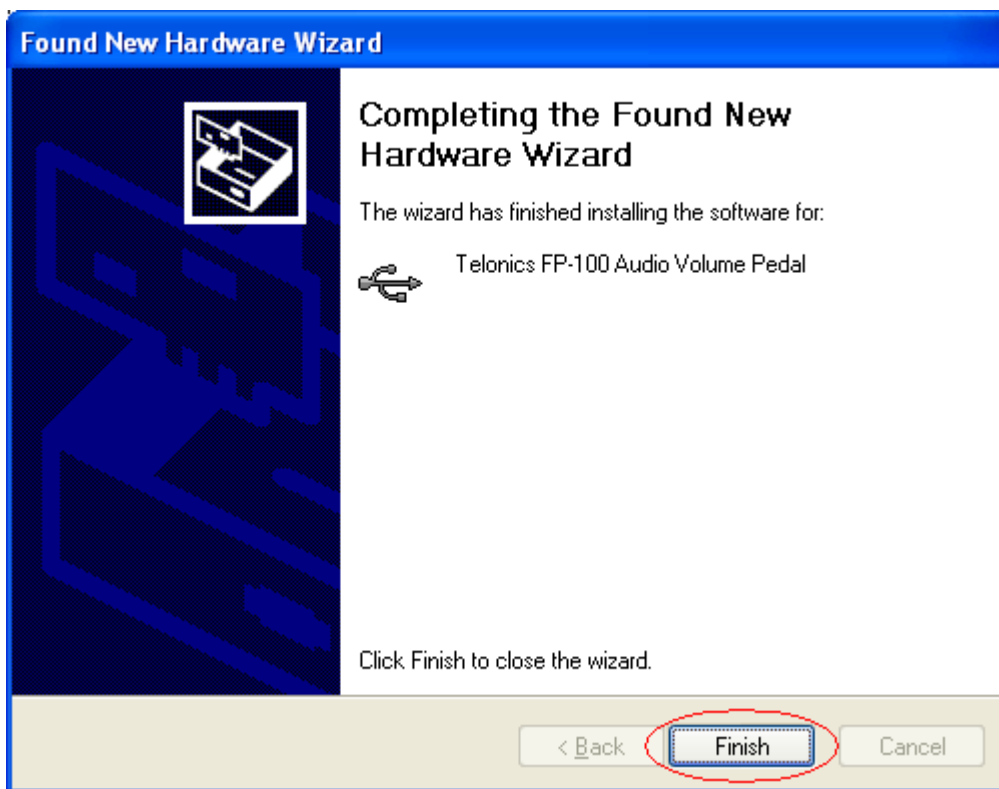
When you see the following page, click the **Install the software automatically (Recommended)** radio button and then click the **Next** button.



If the Windows XP **Driver Signing Options** are set to **Warn**, then you will see the following message. Click the **Continue Anyway** button.



If you see the following page, you have successfully installed the driver for the FP-100. Click the **Finish** button.



If you see the following page, the driver installation failed and you must reinstall FP-100 Toolbox:

